



Philips  
**transcription set**  
with SpeechExec workflow  
software

## Transcription



LFH7177

# Optimize your workflow

with a professional document-creation solution

The transcription set is a digital document creation solution specifically designed to make transcription easy and intuitive. The ergonomic accessories and the innovative SpeechExec workflow software let you manage your jobs easily.

### Comfortable and reliable

- Ergonomic foot pedal for convenient playback control
- Lightweight stereo headphones for enhanced wearing comfort

### Enhance your productivity

- SpeechExec workflow software for efficient data management
- Priority setting for getting urgent recordings processed first
- Seamless integration into Philips digital dictation solutions

**PHILIPS**  
sense and simplicity

# Specifications

## Convenience

- Configurable foot pedal
- Lightweight headphone design
- Clear job overview
- Versatile audio player
- Playback speed control
- Automatic file routing

## Foot pedal

- Connectivity: USB plug
- Product dimensions (W × H × D): 160 mm × 150 mm × 18 mm/6.3" × 5.9" × 0.7"
- Weight: 0.61 kg/1.3 lb

## Headphones

- Style: under chin
- Cable connection: one-sided
- Cable length: 3.0 m/10 ft
- Connector: 3.5 mm, stereo, right angled
- Acoustic system: open
- Magnet type: neodymium
- Diaphragm: PET dome
- Voice coil: copper
- Impedance: 2 × 32 Ohm
- Maximum power input: 2 × 10 mW
- Sensitivity: 103 dB
- Speaker diameter: 14 mm/0.6"
- Sound quality: optimized for voice playback
- Connector finish: gold-plated
- Weight: 0.053 kg/0.12 lb

## System requirements

- Processor: Pentium IV 1 GHz recommended
- RAM memory: 1 GB (2 GB recommended)
- Hard disk space: 100 MB for SpeechExec, 850 MB for Microsoft .NET 4
- Headphone output or speakers
- Operating system: Windows 7 (32/64-bit), Windows Vista (32/64-bit), Windows XP (32 bit)
- Free USB port
- DVD-ROM drive
- Graphics card: DirectX-compliant graphics card with hardware acceleration recommended
- Sound device: Windows-compatible sound device

## Green specifications

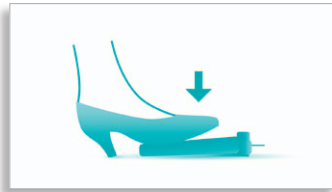
- Compliant to 2002/95/EC (RoHS)
- Lead-free soldered product

## Package contents

- SpeechExec Transcribe software
- Stereo headphones LFH0334
- USB foot pedal LFH2330
- User manual

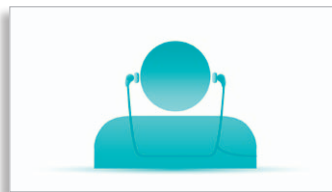
# Highlights

## Ergonomic foot pedal



Ergonomic foot pedal for hands-free control of all transcription and playback functions. The slim, ergonomic design guarantees operation with minimal physical strain.

## Professional headphones



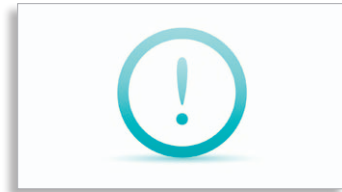
Lightweight, under-the-chin-style stereo headphones designed to deliver excellent sound quality, with soft ear cushions for enhanced wearing comfort.

## SpeechExec software#



The SpeechExec software organizes the workflow of dictation files and resulting documents between author and transcriptionist and allows you to monitor the status of your work.

## Priority setting



With the included priority-setting option, urgent recordings can be prioritized. This guarantees that important dictation files will be identified at a glance and get processed and delivered first.

## Seamless integration



The transcription set can be seamlessly and easily integrated into existing Philips digital dictation solutions.



Issue date  
2011-10-31  
Version 2.0

© 2011 Koninklijke Philips Electronics N.V.  
All rights reserved.

Specifications are subject to change without notice.  
Trademarks are the property of Koninklijke Philips Electronics N.V. or their respective owners.

[www.philips.com/dictation](http://www.philips.com/dictation)